
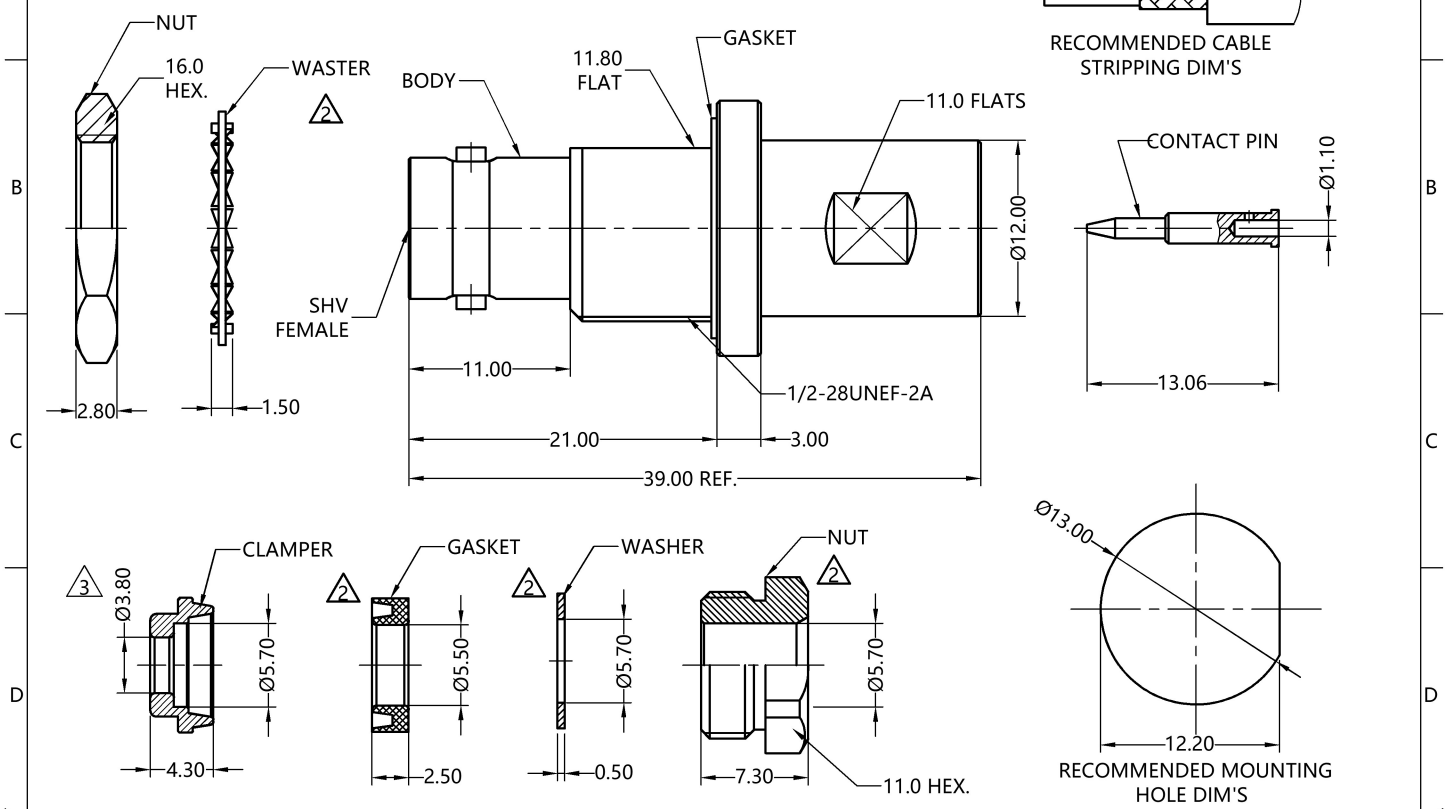


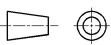

REV.	DESCRIPTION	ECN NO.	NAME	DATE	CODDATE	 ALL PARTS MUST MEET TO RoHS REQUIREMENTS
3	UPDATE THE SIZE	N/A	HRWEI	2024/9/26	CODSIGN	

REMARKS:
 1. CONTACT PIN TO SOLDER
 2. PANL THICKNESS WAS 6.4 mm MAX.
 3. ADDS SIZE: 17.40 mm



MATERIALS AND PLATING			UNIT: MICRO-INCHES	ELECTRICAL CHARACTERISTICS	
PART NAME	MATERIALS	PLATING			
BODY/NUT	BRASS C3604	NICKEL 100 u"/ COPPER		IMPEDANCE	50 Ω
INSULATOR	PTFE ASTM-D-1710	N/A		VOLTAGE RATING	3500 V(rms)
CONTACT PIN	BRASS C3604	SILVER 200 u"/COPPER		FREQUENCY RANGE	DC-300 MHz
WASHER	BRASS	NICKEL 100 u"/ COPPER		DIELECTRIC WITHSTANDING VOLTAGE	>5000 V
GASKET	SILICONE	N/A		CONTACT RESISTANCE	CENTER CONTACT <2.0 mΩ OUTER CONTACT <1.5 mΩ
CLAMPER	BRASS C3604	NICKEL 100 u"/ COPPER		INSULATION RESISTANCE	>5000 MΩ
				INSERTION LOSS	N/A
				VSWR	N/A
				3RD INTERMODULATION	N/A
MECHANICAL CHARACTERISTICS			ENVIRONMENTAL PARAMETER		
FORCE TO ENGAGE AND DISENGAGE		N/A	TEMPERATURE RANGE		-40 °C~+125 °C
CENTER CONTACT RETENTION FORCE		N/A	CORROSION		MIL- STD 202, Meth. 101,Cond. B
RECOMMENDED COUPLING TORQUE		N/A	VIBRATION		MIL- STD 202, Meth. 204,Cond. A
COUPLING NUT RETENTION FORCE		> 60 lbs	SHOCK		MIL- STD 202, Meth. 213,Cond. I
DURABILITY		> 500 cycles			

CUSTOMER OUTLINE DRAWING

CUSTOMER OUTLINE DRAWING UNLESS OTHERWISE SPECIFIED: 1) EDGES: C0.10 MAX. 2) REMOVE ALL BURRS; 3) SURFACE ROUGHNESS: Ra0.8 4) UNITS: mm 5) DIMENSIONS TOLERANCES DECIMALS: .x±0.1, .xx±0.05 ANGLES: ±3° AXIALITY: 0.03		THIRD ANGLE PROJECTION  APPROVE: APPROVED STANDARD: STANDARDS PROCESS: PROCESSES CHECK: CHECKED DRAWING: HRWEI	CUSTOMER P/N: PNUM: LIFE STAGE: SCALE: 2:1 FRAME: A4 PAGE: 1/1 DATE: 2024/9/26	 TITLE: SHV FEMALE S/T FOR RG58/RG142 CABLE,50Ω PRODUCT P/N: 5SHF34S-A09-100 WEBSITE : www.slkcorp.com PLM V2.3
---	--	--	--	---