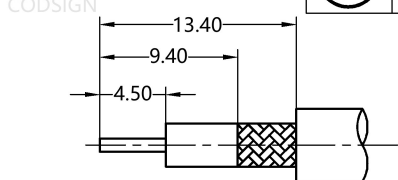


REV.	DESCRIPTION	ECN NO.	NAME	DATE	4	5	6
3	UPDATE VIEW	N/A	CG	2024/9/13			

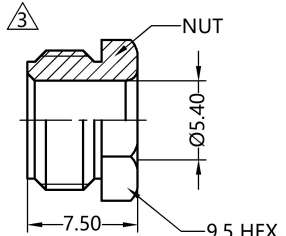
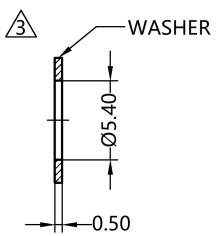
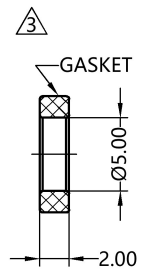
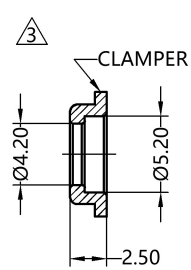
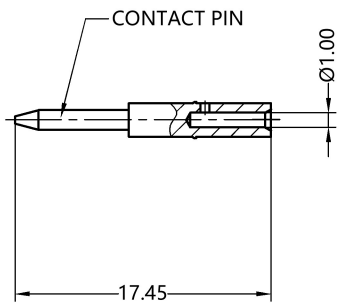
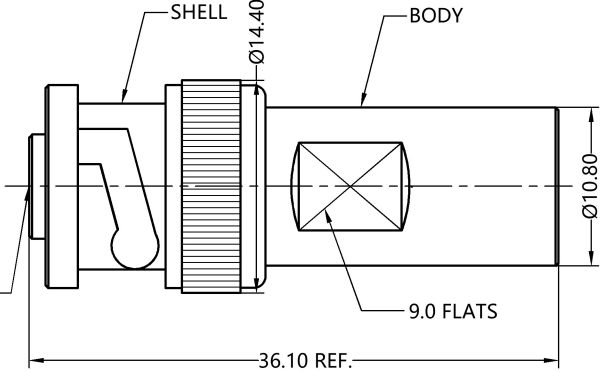


ALL PARTS MUST MEET TO RoHS REQUIREMENTS

REMARKS:  
1. CONTACT PIN TO SOLDER  
2. ADDS SIZE: 14.95 mm



RECOMMENDED CABLE STRIPPING DIM'S



MATERIALS AND PLATING		UNIT: MICRO-INCHES
PART NAME	MATERIALS	PLATING
BODY/SHELL	BRASS	NICKEL 100 u"/ COPPER
INSULATOR	PTFE ASTM-D-1710	N/A
CONTACT PIN	BRASS C3604	GOLD 30 u"/NICKEL/COPPER
CLAMPER /NUT	BRASS C3604	NICKEL 100 u"/ COPPER
GASKET	SILICONE	N/A
WASHER	BRASS C3604	NICKEL 100 u"/ COPPER $\Delta$

ELECTRICAL CHARACTERISTICS	
IMPEDANCE	50 $\Omega$
VOLTAGE RATING	3500 V(rms)
FREQUENCY RANGE	DC-300 MHz
DIELECTRIC WITHSTANDING VOLTAGE	>5000 V
CONTACT RESISTANCE	CENTER CONTACT <2.0 m $\Omega$
	OUTER CONTACT <1.5 m $\Omega$
INSULATION RESISTANCE	>5000 M $\Omega$
INSERTION LOSS	N/A
VSWR	N/A
3RD INTERMODULATION	N/A

MECHANICAL CHARACTERISTICS	
FORCE TO ENGAGE AND DISENGAGE	N/A
CENTER CONTACT RETENTION FORCE	N/A
RECOMMENDED COUPLING TORQUE	N/A
COUPLING SHELL RETENTION FORCE	> 60 lbs
DURABILITY	> 500 cycles

ENVIRONMENTAL PARAMETER	
TEMPERATURE RANGE	-40 °C~+125 °C
CORROSION	MIL- STD 202, Meth. 101,Cond. B
VIBRATION	MIL- STD 202, Meth. 204,Cond. A
SHOCK	MIL- STD 202, Meth. 213,Cond. I

CUSTOMER OUTLINE DRAWING

UNLESS OTHERWISE SPECIFIED:  
1) EDGES: C0.10 MAX.  
2) REMOVE ALL BURRS;  
3) SURFACE ROUGHNESS: Ra1.6  
4) UNITS: mm  
5) DIMENSIONS TOLERANCES  
DECIMALS: .x $\pm$ 0.1, .xx $\pm$ 0.05, .xxx $\pm$ 0.02  
ANGLES:  $\pm$ 5° AXIALITY: 0.05

THIRD ANGLE PROJECTION	
APPROVE:	APPROVED
STANDARD:	STANDARDS
PROCESS:	PROCESSES
CHECK:	CHECKED
DRAWING:	CG

CUSTOMER P/N:	
PNUM:	
LIFE STAGE:	
SCALE:	2:1
FRAME:	A4
PAGE:	1/1
DATE:	2024/9/13

TITLE:  
MHV MALE CLAMP FOR RG142 CABLE, 50 $\Omega$

PRODUCT P/N:  
5MVM14S-A09-100

WEBSITE : www.slkcorp.com | PLM V2.3

CUSTOMER OUTLINE DRAWING